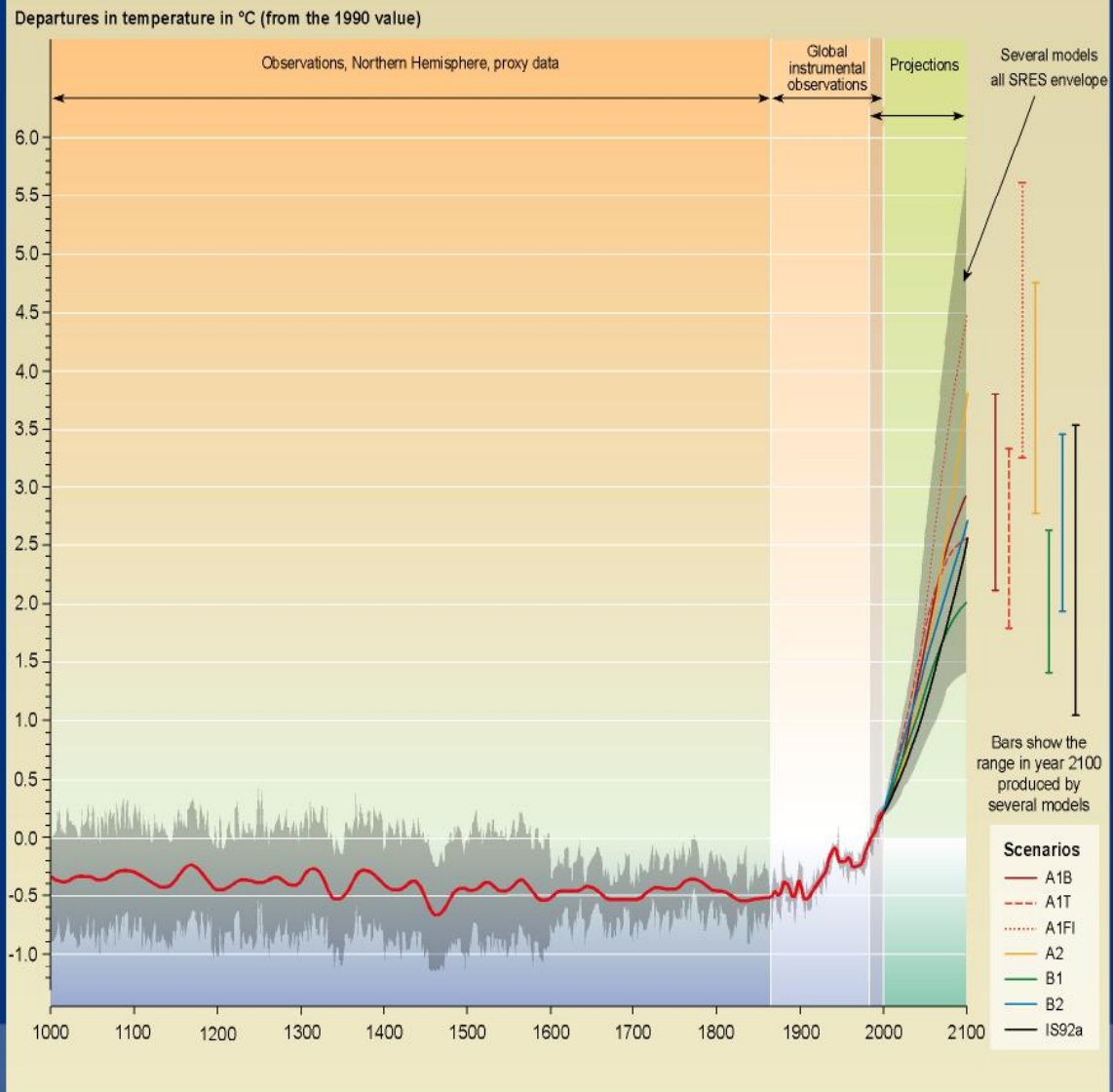
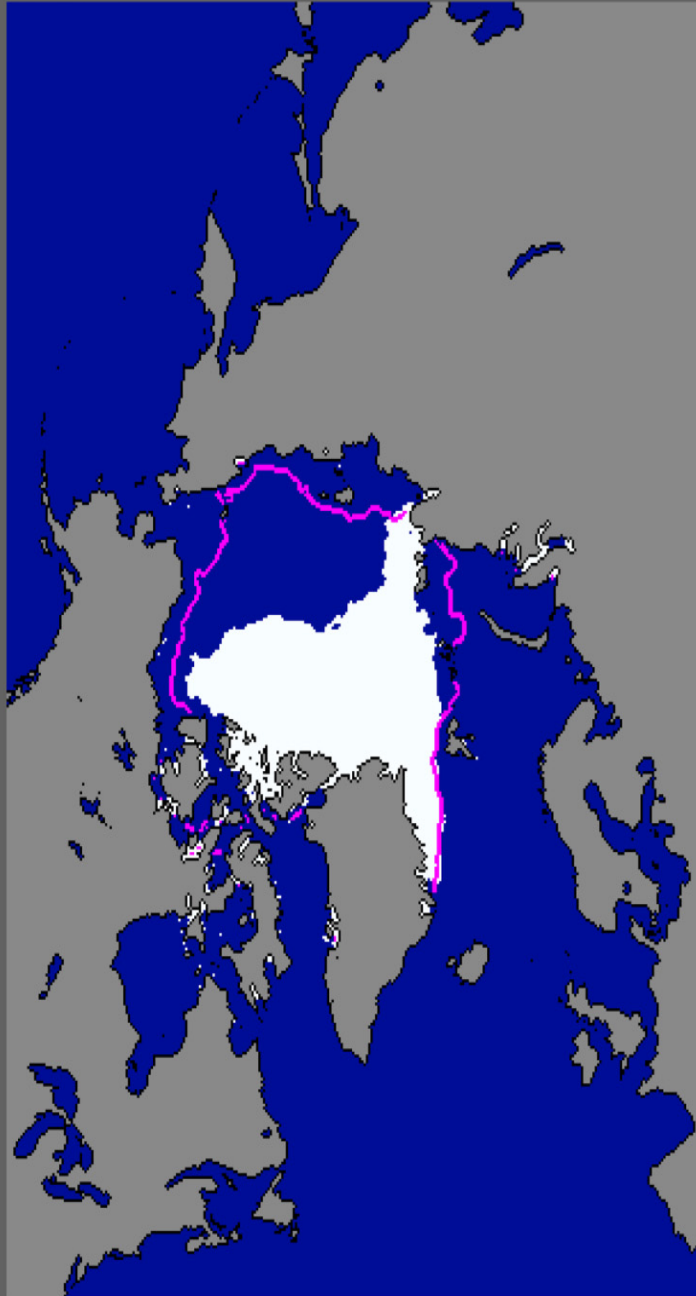


Variations of the Earth's surface temperature: year 1000 to year 2100



SYR - FIGURE 9-1b

Current Ice Extent
09/16/2007

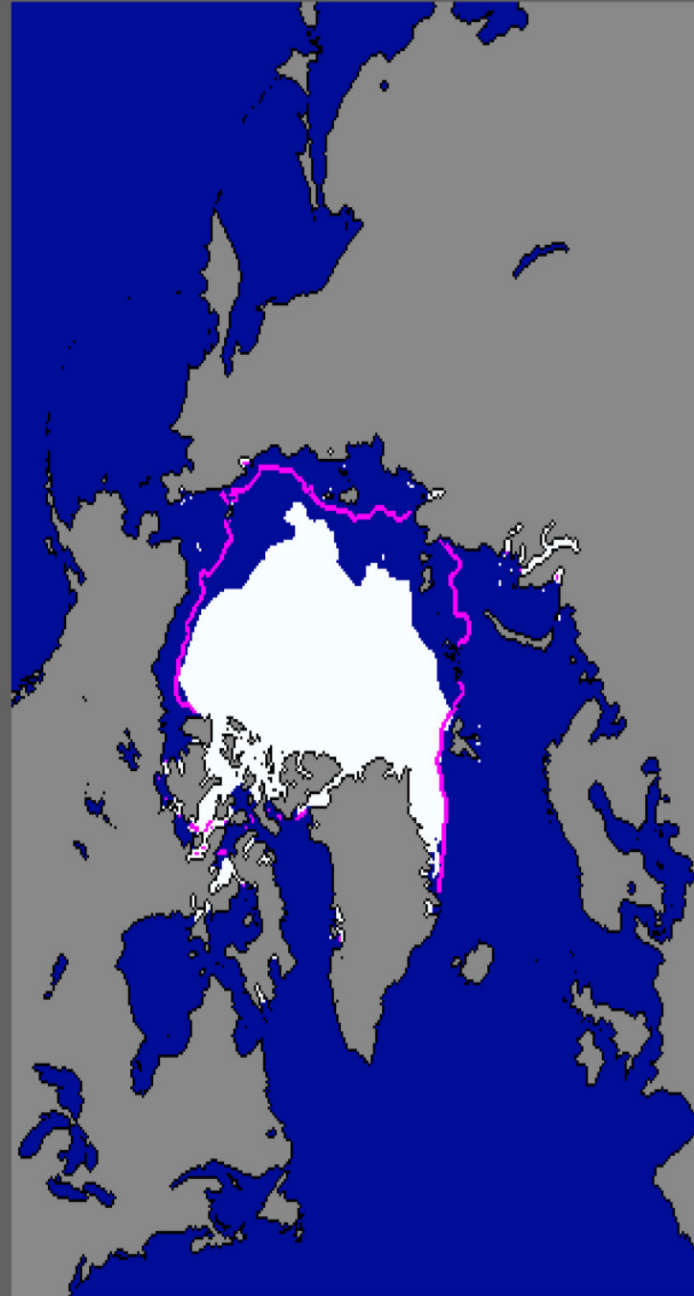


National Snow and Ice Data Center, Boulder, CO

median
ice edge

Total extent = 4.1 million sq km

Current Ice Extent
09/21/2005



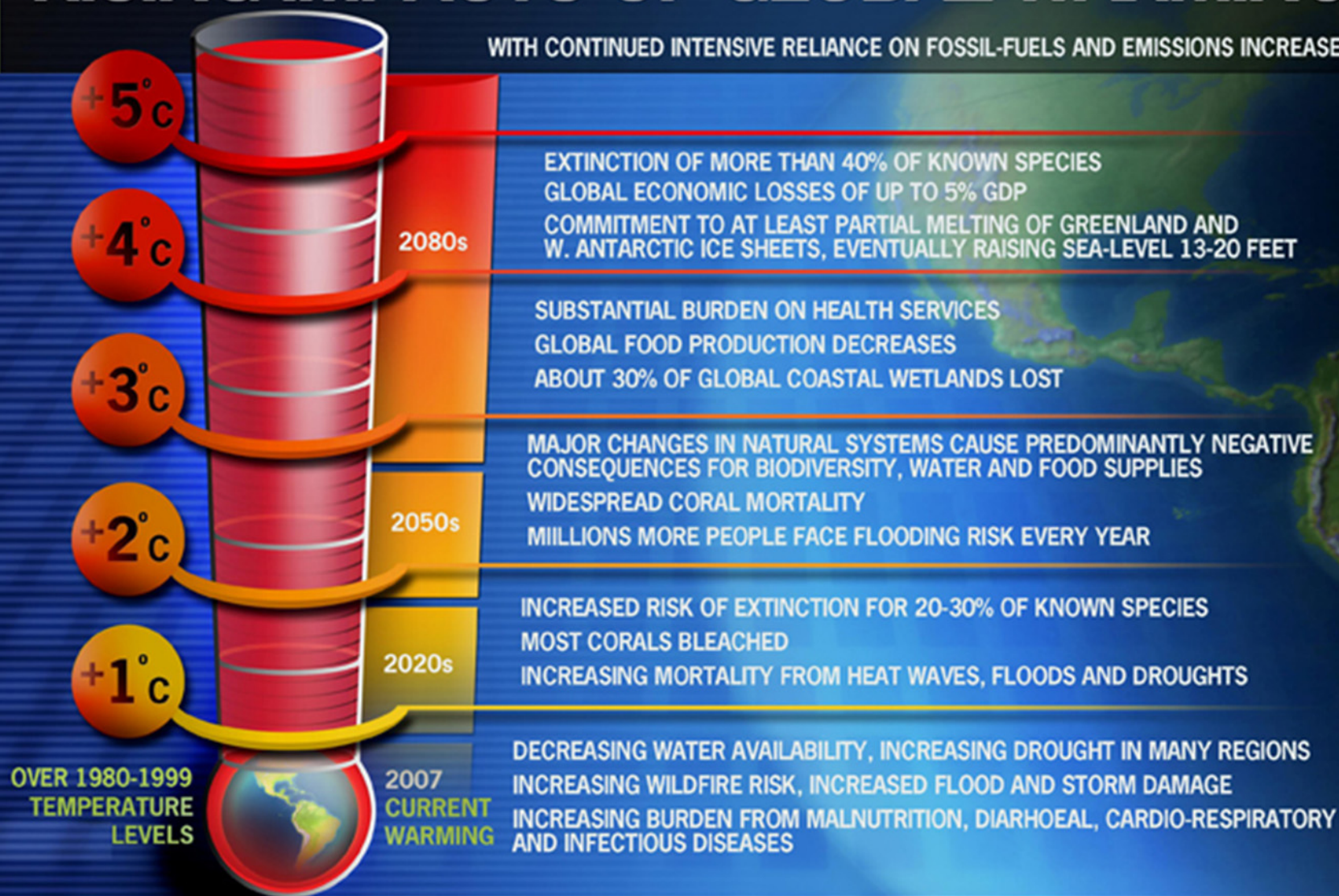
National Snow and Ice Data Center, Boulder, CO


median
ice edge

Total extent = 5.3 million sq km

RISING IMPACTS OF GLOBAL WARMING

WITH CONTINUED INTENSIVE RELIANCE ON FOSSIL-FUELS AND EMISSIONS INCREASES

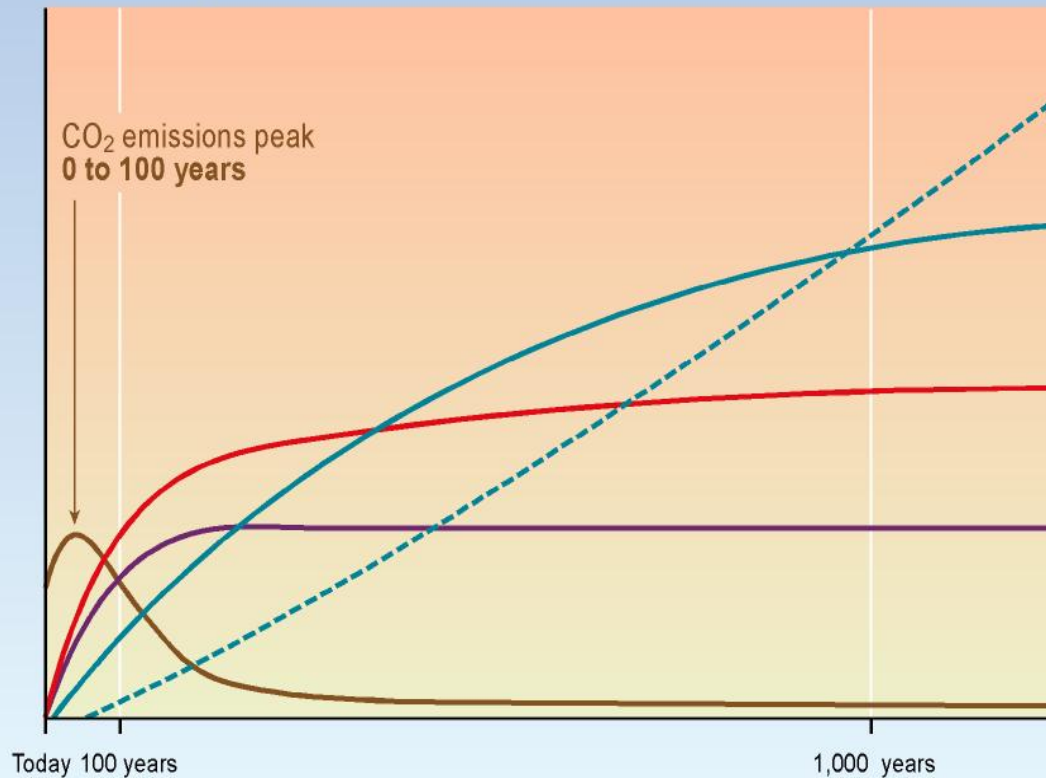


 www.net.org

Source: IPCC Fourth Assessment Report, Working Group II Summary for Policymakers. Timing of temperature increases based on IPCC scenarios that assume continued intensive reliance on fossil-fuels and emissions increases. Emissions reductions would reduce the amount and rate of warming.
Conversion of temperature increases—Celsius to Fahrenheit: 1°C = 1.8°F; 2°C = 3.6°F; 3°C = 5.4°F; 4°C = 7.2°F.
Produced by National Environmental Trust.

CO₂ concentration, temperature, and sea level continue to rise long after emissions are reduced

Magnitude of response



Time taken to reach equilibrium

Sea-level rise due to ice melting:
several millennia

Sea-level rise due to thermal expansion:
centuries to millennia

Temperature stabilization:
a few centuries

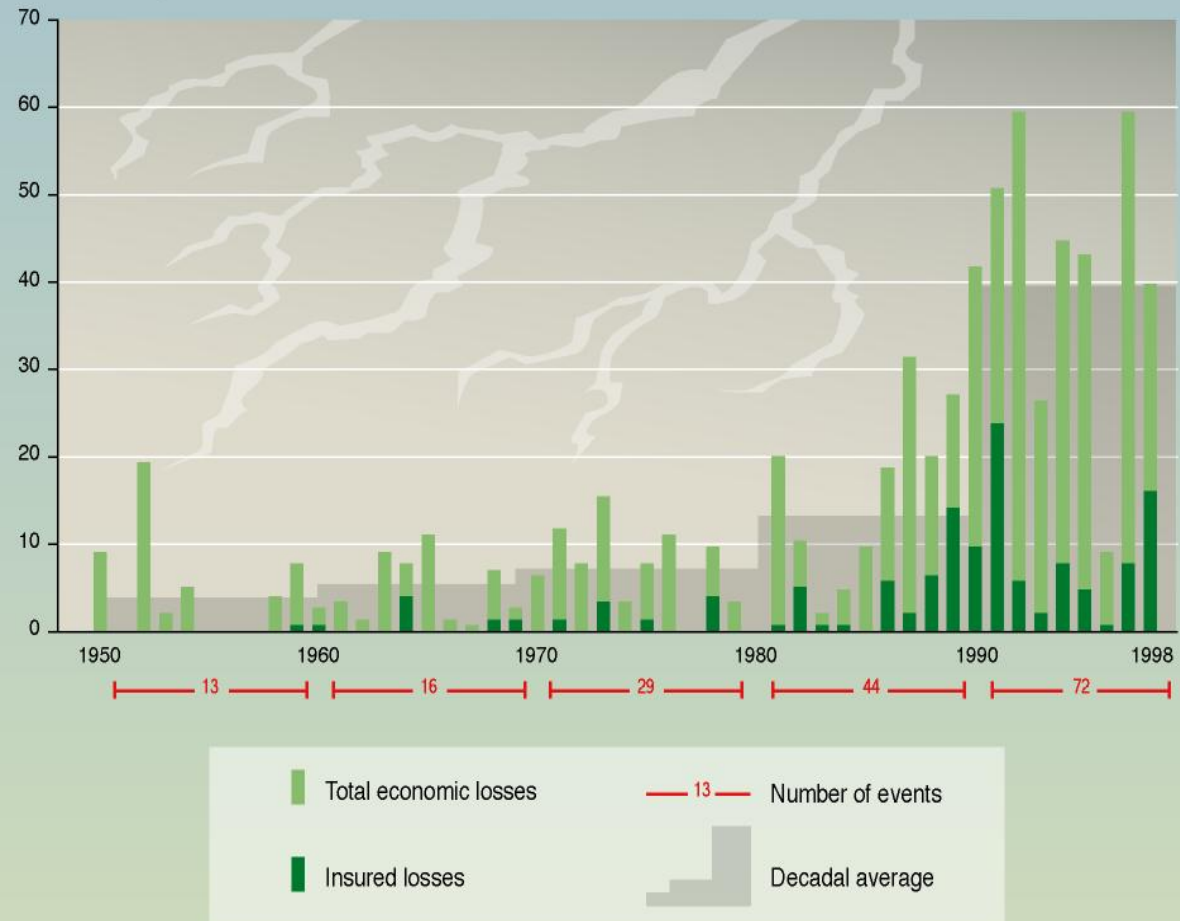
CO₂ stabilization:
100 to 300 years

CO₂ emissions

SYR - FIGURE 5-2

Global costs of extreme weather events (inflation-adjusted)

Annual losses, in thousand million U.S. dollars

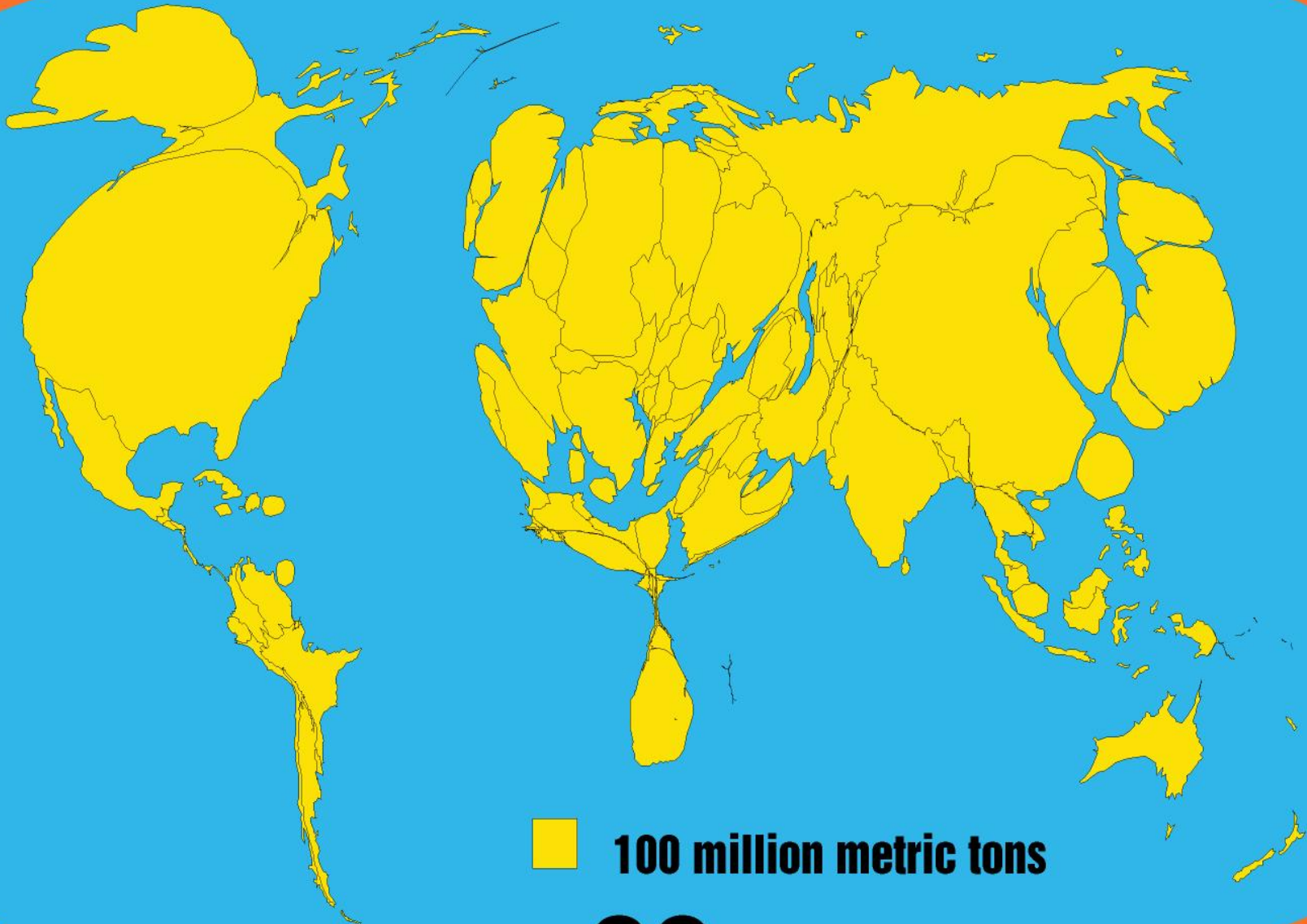


SYR - FIGURE 2-7

Null utslippssamfunnet

- Rundt 2050 må vi transportere oss, produsere varer og tjenester, varme opp hus, skaffe lys osv praktisk talt **uten utslipp av klimagasser**

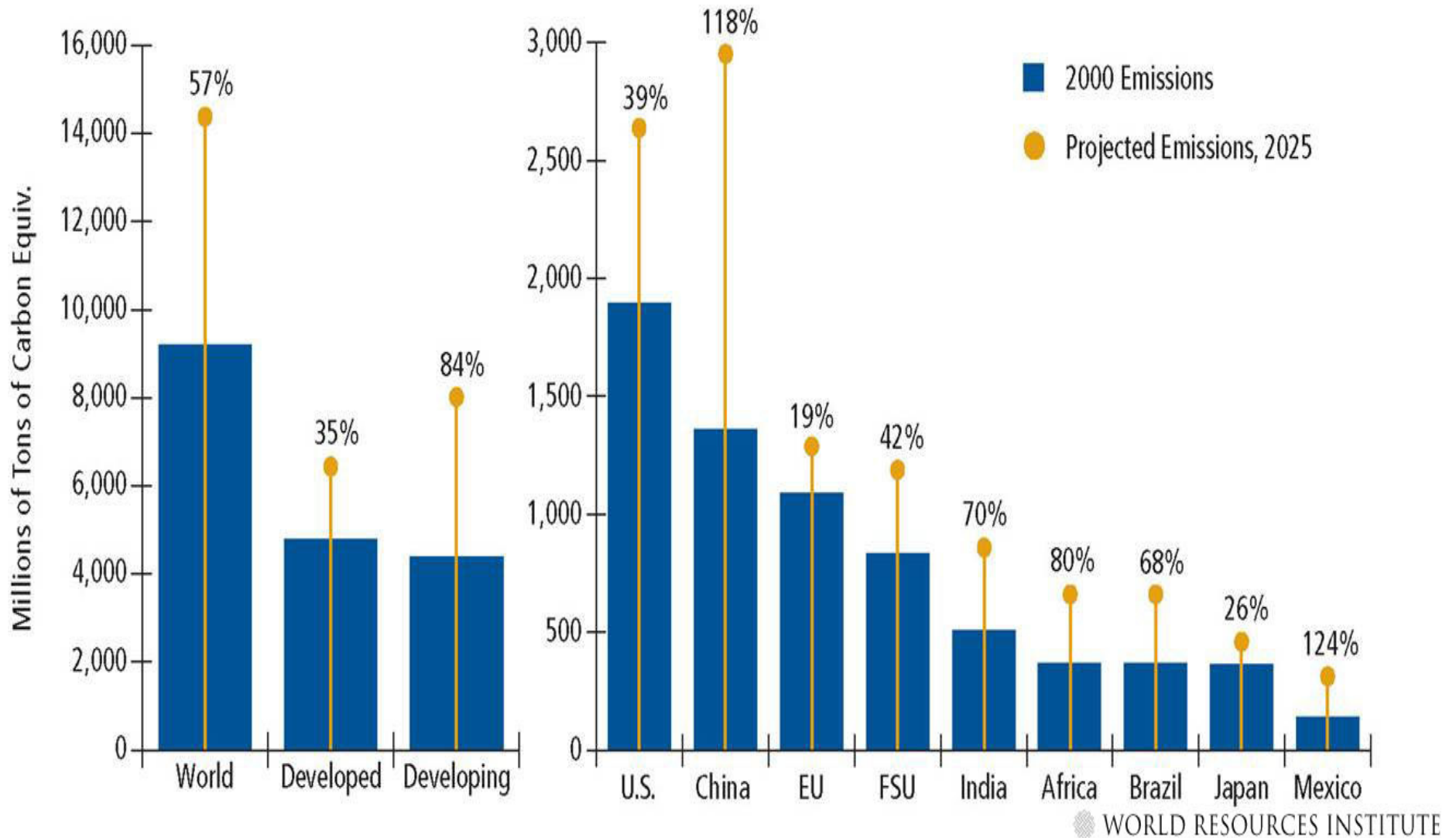
world out of shape



■ 100 million metric tons

CO₂

Projected Emissions of GHGs in 2025



Store reduksjoner hjemme og ute

- Klimaproblemet er de rike lands ansvar
- I dag betaler vi for å få lov til å øke
- Norge må jobbe for et todelt Kyoto mål
 - En forpliktelse om å redusere utslippene i de rike landnd
 - Et mål for hvor mye penger rike land skal bidra med til klimakutt i den tredje verden



 **NORGES**
NATURVERNFORBUND 



 **NORGES
NATURVERNFORBUND** 

Tips til forsikringssselskapene

- Er det mulig å legge inn miljø/ klimakrav?
 - Bedre avtaler for biler med lave utslipp?
 - Ved gjenoppbygning, stille energikrav?
 - Downlights – potensielt stor branfare og energisluk – bruk heller led